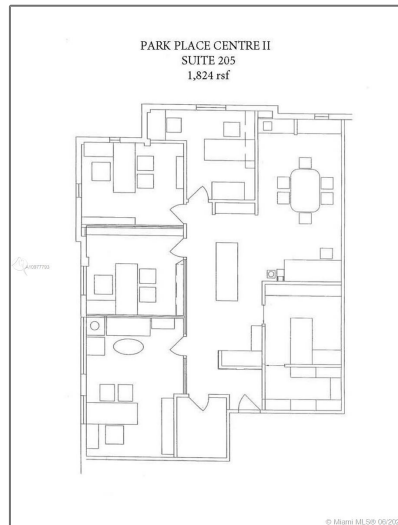
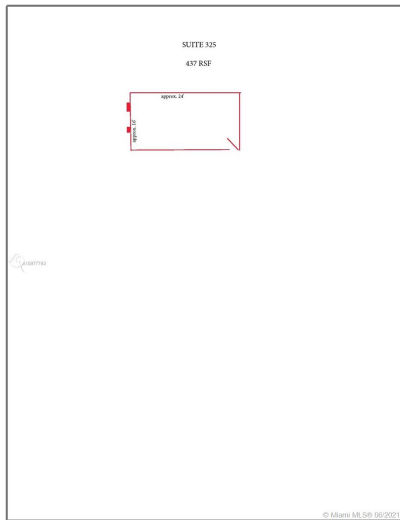


Commercial Sale For Sale

- 1501 Venera Ave, Coral Gables, Florida 33146



PARK PLACE CENTRE II

FOR LEASE
Park Place Centre
1501 Venera Ave, Coral Gables FL

Aerial Photo of Neighborhood

- Prime A+ Location
- Mediterranean Architecture
- Walking Distance to Whole Foods & Postcard Shopping Area
- Covered & Uncovered Assigned Parking
- Ample Street Parking
- 24hr Access
- Professionally Managed

Space Available
437 rsf available on 07/01/21
1824 rsf available on 08/01/21

FOR LEASING INFORMATION CONTACT:
RMC
Reynolds Management Corporation
Coral Gables, FL 33134
Tel: 305-442-8888
jmc@rmc.com

RMC Real Estate Management, Leasing and Title Specialists
Licensed Real Estate Broker

Reynolds Management Corporation, its affiliates, employees or representatives do not represent or warrant as to the accuracy or reliability of this information. We encourage you to use this information to independently verify its accuracy and compliance.

© Miami ML DB 06/2021

Basic

Property Type: **Commercial Sale**

Listing Type: **For Sale**

Listing ID: **A10977793**

Price: **\$1,650**

Year Built: **1981**

Lot Area: **31,603 Sqft**

Address

Country: **US**

State: **FL**

County: **Miami-Dade County**

City: **Coral Gables**

Zipcode: **33146**

Street: **1501 Venera Ave**

Floor Number: **0**

Agent



Svetlana Costantini

📞 954-459-5268

✉️ svetlana@costantinirealty.com

✉️ igor@costantinirealty.com

